

HIAB X-CLX 328 EP

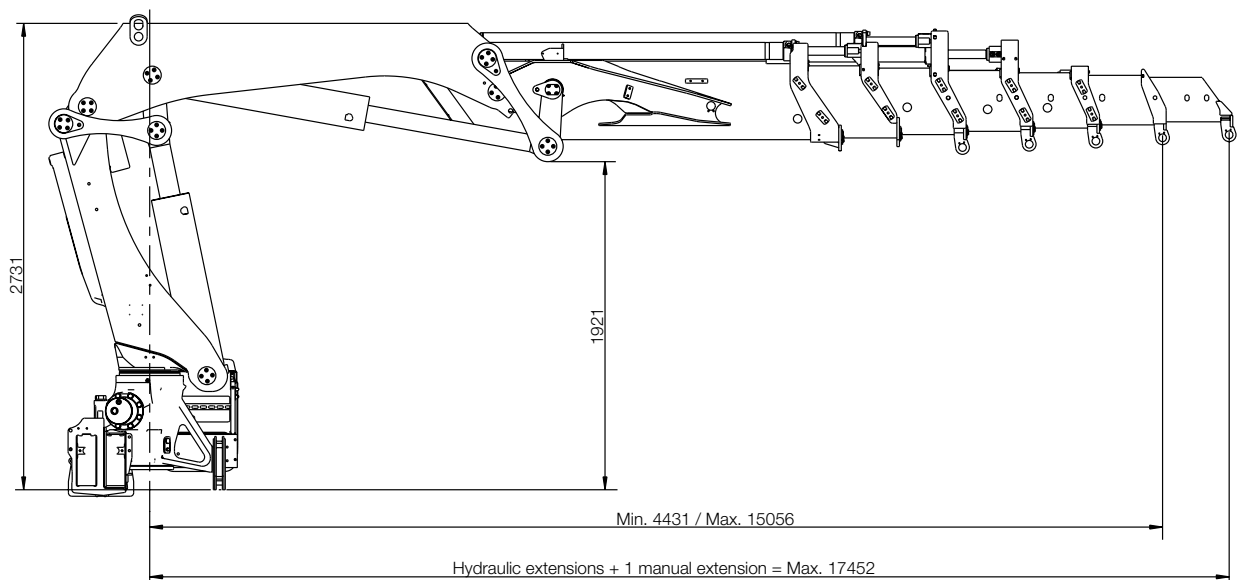


HIAB X-CLX 328 EP BASIC DATA

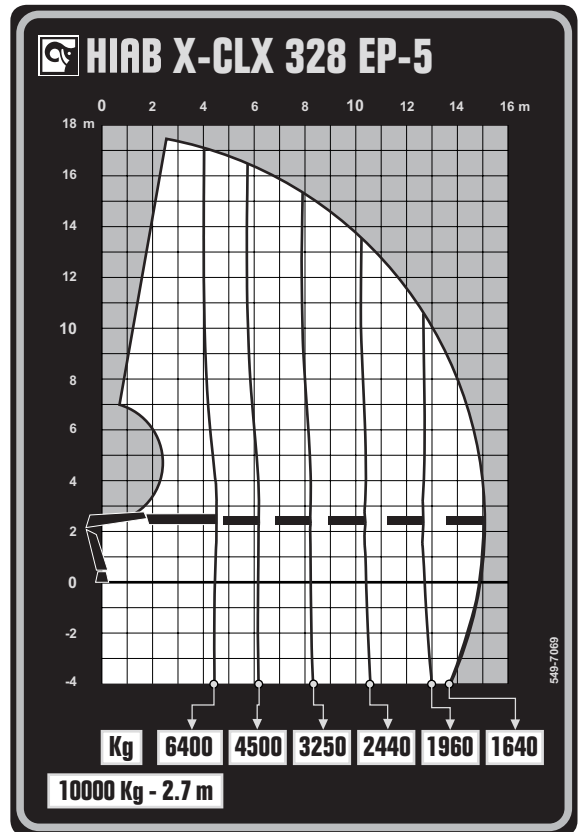
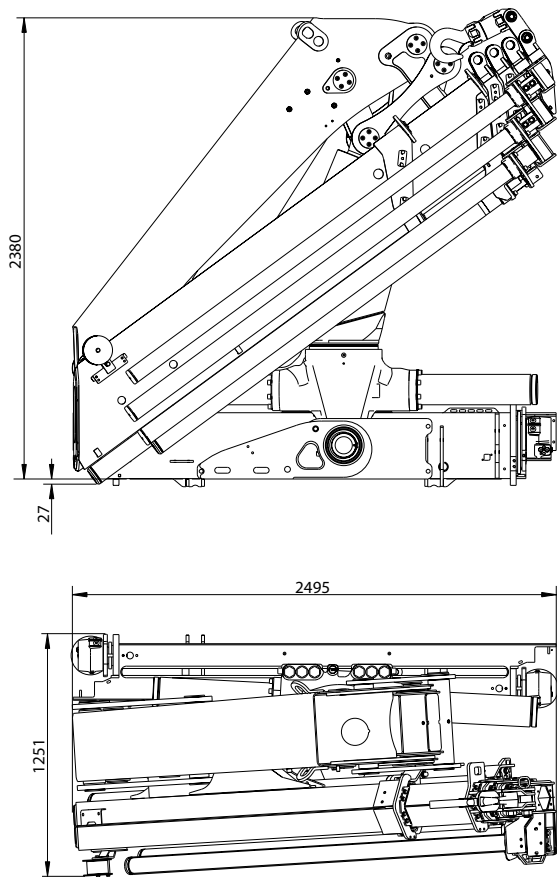
| TECHNICAL DATA | X-CLX 328 EP-2 | X-CLX 328 EP-3 | X-CLX 328 EP-4 | X-CLX 328EP-5 |
|---|---|---|---|---|
| Mdyn | 381 kNm | 390 kNm | 396 kNm | 401 kNm |
| Lifting capacity (kNm) | 297 | 291 | 284 | 279 |
| Lifting capacity (tm) | 30.3 | 29.7 | 29.0 | 28.5 |
| Outreach - lifting capacity, standard (m-kg) | 2.9 - 10 000 4.2 - 7 300 6.0 - 5 100 8.0 - 3 800 | 2.8 - 10 000 4.3 - 7 000 6.0 - 4 950 8.0 - 3 650 10.2 - 2 850 | 2.8 - 10 000 4.4 - 6 700 6.1 - 4 700 8.1 - 3 400 10.3 - 2 600 12.6 - 2 120 | 2.7 - 10 000 4.5 - 6 400 6.2 - 4 500 8.2 - 3 250 10.4 - 2 440 12.7 - 1 960 15.0 - 1 640 |
| Outreach - lifting capacity, manual extensions (m-kg) | - | - | - | 17.4 - 1 340 |
| Hydraulic outreach, standard (m) | 8.0 | 10.3 | 12.7 | 15.1 |
| Hydraulic boom extension (m) | 3.8 | 6.0 | 8.3 | 10.6 |
| Outreach, manual extensions (m) | - | - | - | 17.6 |
| Lifting height above installation level, hydr/man (m) | 10.6 / - | 12.9 / - | 15.2 / - | 17.6- 20 |
| Rec. oil flow (l/min) | 60 - 90 | 60 - 90 | 60 - 90 | 60 - 90 |
| Working pressure (Mpa) | 32.0 | 32.0 | 32.0 | 32.0 |
| Slewing angle (°) | 420 | 420 | 420 | 420 |
| Max slope viable at full capacity (°) | 3 | 3 | 3 | 3 |
| Height in folded position (mm) | 2 380 | 2 380 | 2 380 | 2 380 |
| Width in folded position (mm) | 2 495 | 2 495 | 2 497 | 2 497 |
| Install space required (mm) | 1120 | 1 198 | 1 239 | 1 239 |
| Crane weight in standard version without stabiliser system (kg) | 2 991 | 3 201 | 3 405 | 3 563 |
| Frame attachments (kg) | 69 - 89 | 69 - 89 | 69 - 89 | 69 - 89 |
| Stabiliser system (kg) | 454 - 556 | 454 - 556 | 454 - 556 | 454 - 556 |

This table shows one example of a model, and represents some of all options available. With the opportunity to configure your crane, we can provide you with a crane perfectly tailored to your needs.

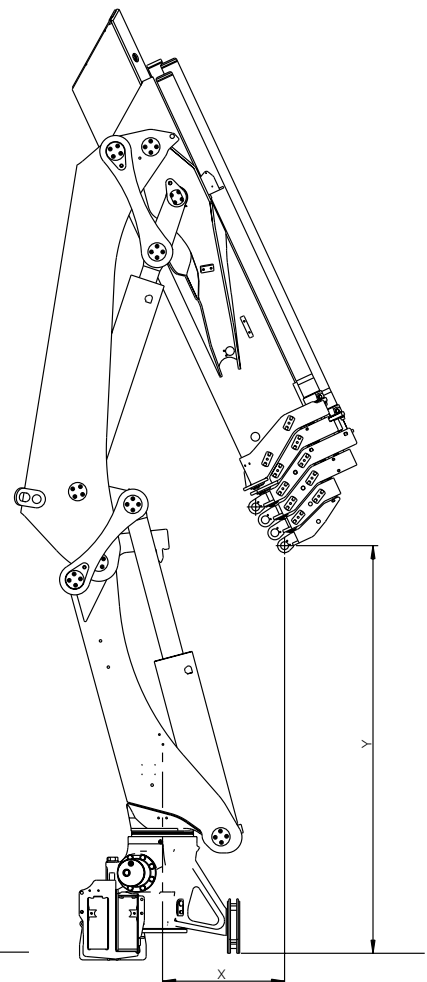
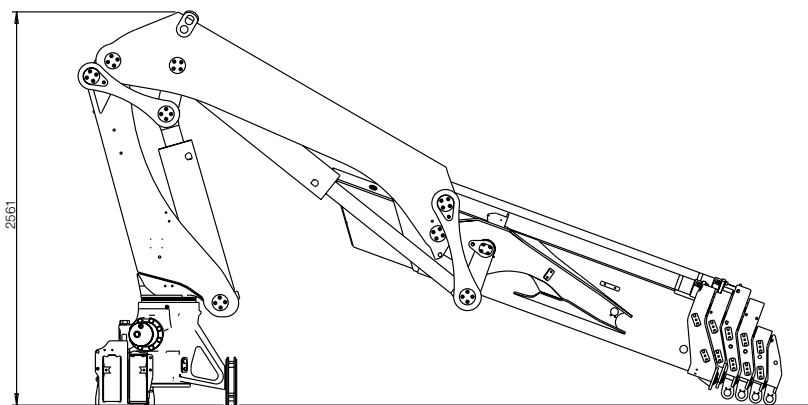
Please contact your local dealer for more information and the exact data on the variety of options we can offer.



HIAB X-CLX 328 EP-5



| X | Y |
|-------|-------|
| 700 | 2 338 |
| 1 000 | 2 462 |



BUILT TO PERFORM

Hiab is the world's leading provider of on-road load handling equipment. Customer satisfaction is the first priority for us. Hiab's product range includes HIAB loader cranes, JONSERED recycling and forestry cranes, LOGLIFT forestry cranes, MOFFETT truck mounted forklifts and MULTILIFT demountables, as well as DEL, WALTCO and ZEPRO tail lifts.

hiab.com

Hiab is part of Cargotec.

cargotec.com



© BD-XCLX328EP-EN-WW_171121



hiab.com



DAI LIENG TRADING SDN BHD (223694-K)

Lot 2541, Jalan Manettia, Piasau Lorong 8,
Pujut-Lutong Road, P.O.Box 1337,
98000 Miri, Sarawak, Malaysia.

Tel: +60 85 655855 Fax: +60 85 655618

Email : headoffice@dailieng.com.my

Website : www.dailieng.com.my